
www.trust.com

USER MANUAL



Item 71119 Version 2.0
Visit www.trust.com
for the latest instructions

WIFI IP CAMERA WITH NIGHTVISION

- DE** Das Handbuch in Deutsch finden Sie unter trust.com/71119
- FR** Le mode d'emploi français est disponible sur trust.com/71119
- NL** De Nederlandstalige handleiding is beschikbaar op trust.com/71119
- IT** Il manuale in italiano è disponibile alla pagina trust.com/71119
- ES** El manual en español se encuentra en trust.com/71119
- PT** O manual em português está disponível em trust.com/71119
- NO** Den norske brukerveiledningen er tilgjengelig via: www.trust.com/71119
- SV** Den svenska manualen finns på trust.com/71119
- FI** Suomenkielinen käyttöopas on saatavissa osoitteessa trust.com/71119
- DA** Den danske manual er tilgængelig på trust.com/71119
- PL** Instrukcja w języku polskim dostępna jest pod adresem trust.com/71119

- CS** Příručka v češtině je k dispozici na webu trust.com/71119
- SK** Slovenský návod je k dispozícii na trust.com/71119
- HU** A magyar nyelvű kézikönyv a trust.com/71119 weboldalon található
- RO** Manualul în limba Română este disponibil la adresa trust.com/71119
- BG** Ръководство на български език е на разположение на trust.com/71119
- EL** Το ελληνικό εγχειρίδιο είναι διαθέσιμο στη διεύθυνση trust.com/71119
- TR** Türkçe el kitabını trust.com/71119 adresinde bulabilirsiniz
- RU** Руководство по эксплуатации на русском языке доступно на сайте trust.com/71119
- SL** Priročnik v slovenščini je na voljo na spletni strani trust.com/71119
- HR** Priručnik na hrvatskom jeziku dostupan je na trust.com/71119
- UA** Українську версію посібника можна переглянути тут: trust.com/71119

AR

يتوفر هذا الكتيب باللغة العربية على trust.com/71119

Read the manual carefully. Failure to follow these instructions can be dangerous. Incorrect installation will void any warranty on this product.

COMPATIBILITY

The IP Camera is compatible with the Trust Smart Home App and the Octopus Control Station (ICS-2000).

FUNCTIONALITY

IP Camera to monitor your home and loved ones.

WIRELESS RADIO SIGNAL

The WIFI signal passes through walls, windows and doors.
WIFI range: up to 15 m. (optimal conditions).

LIFE SUPPORT

Never use Trust Smart Home products for life support systems or other applications where failures can have life-threatening consequences.

INTERFERENCE

Other Wifi networks, appliances and electronics emitting radio frequency can cause interference which can affect the operation of the IP Camera negatively. Place the IP Camera as close to the modem/router as possible for optimal performance.

REPAIRS

Do not try to repair this product yourself. The device contains no serviceable parts for the user.

WATER-RESISTANT

This product is not water-resistant.

CLEANING

Clean this product with a dry cloth. Do not use harsh chemicals, cleaning solvents or strong detergents.

HANDLING

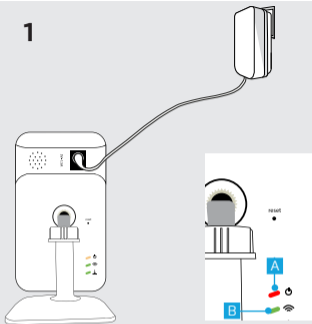
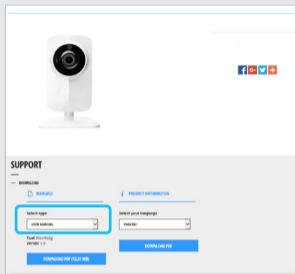
Do not drop the device, bump the device against something or shake it. Rough handling can damage internal circuit boards and fine mechanics.

ENVIRONMENT

The product should not be exposed to extreme heat or cold. This can damage the circuit boards and batteries or shorten its life.

 **WARNING**

Strangulation hazard. Children have strangled in cords. Keep the power cord out of reach of children.



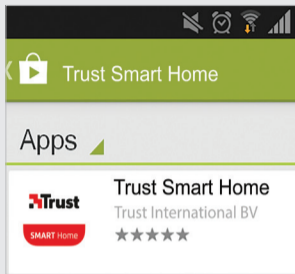
This is a quick installation guide with basic installation and usage instructions. Check the advanced manual on trust.com/71119 for more in-depth information like:

- Camera settings
- Recording video
- Reset camera
- Push notifications
- Motion detection

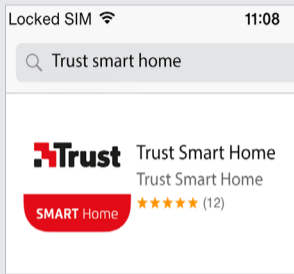
1. Connect the power adapter

Connect the included power adapter to the camera and insert the plug of the power adapter into a wall socket. The LEDs on the back will light up and the camera will start up. The first time the camera starts it can take up to a minute. When the camera is done starting up, the power LED (A) will be lit red continuously and the WIFI LED (B) will start blinking green.

2.1



2.2



2. Install App

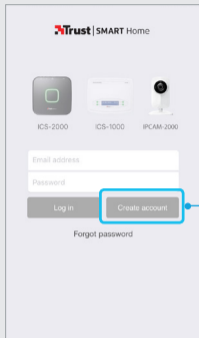
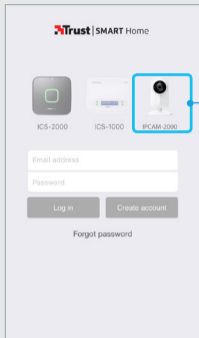
2.1 Android

Open the Play Store, search for the Trust Smarthome app and install the app on your mobile device.

2.2 iOS

Open the App store, search for the Trust Smarthome app and install the app on your mobile device.

3



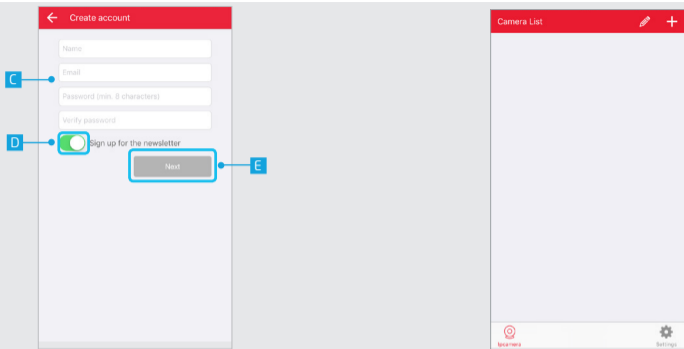
3. Register IP Camera

Open the Trust Smart Home App on your mobile device.

⚠️ If you own an Octopus Control station (ICS-2000) press on the picture of the Octopus Control station, login and go to step 4.1.

A Press on the picture of the IPCAM-2000

B Press the CREATE ACCOUNT button.



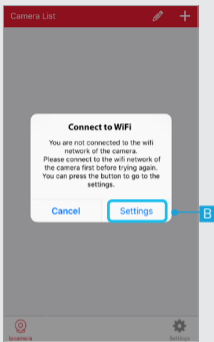
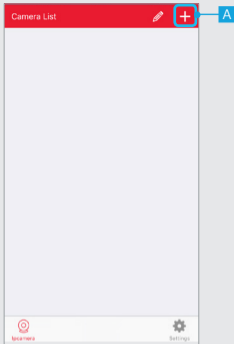
C A screen appears to fill in your account information. Fill in your name, email address and a self created password.

D Choose if you want to receive a newsletter or not.

E When all information is filled in press the NEXT button.

Your account will be registered and the App will open with above following screen.

4.1



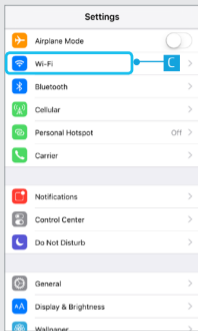
4.1 Connect to camera with iPhone/ iPad (IOS)

! If you are logged in with a Control Station first press on the IP Camera in the menubar on the bottom of the screen.

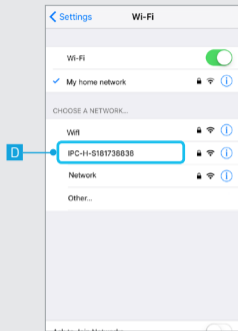
! Go to step 4.2 if you are using an Android device.

A Press the + button at the top of the screen to add a new camera

B A pop-up appears saying you must connect to the Wifi network of the camera. Press on the SETTINGS button.

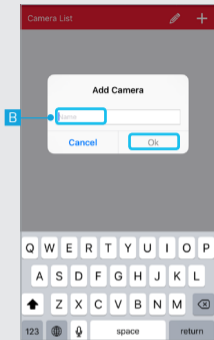
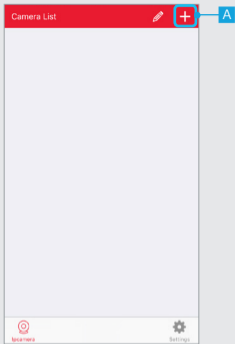


C Go to your WiFi settings to connect to the network of the IP Camera



D Connect to the WiFi network of the camera by pressing on the IPC-H-XXXXX network. Wait until the device is connected with the WiFi network of the camera. (When asked the default password for the camera network is 12345678). After connecting to the network of the camera return to the Trust Smart Home App.

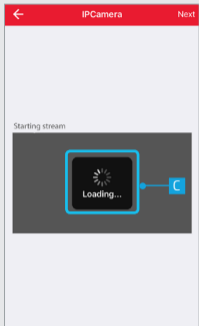
4.2



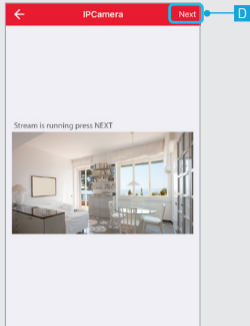
4.2 Add a camera

A Press the + button at the top of the screen.

B Fill in a name for the camera and press OK.



C The App is now connecting to the camera and is loading a preview of the video stream.

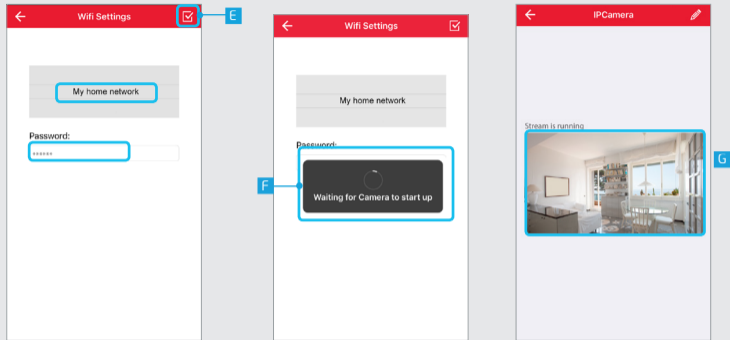


D A preview of the video stream is shown. Press NEXT.

⚠ If no preview is shown of the video stream, try to take the following steps:

1. Check if the power adapter is connected to the IP Camera.
2. Check if the LEDs on the back of the camera are on.

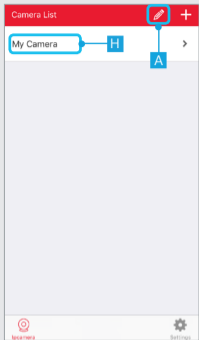
For more troubleshooting go to trust.com/71119.



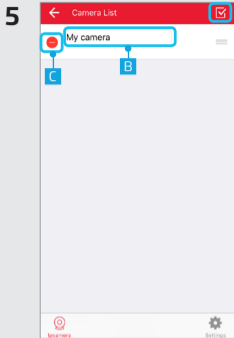
E Choose your Home WiFi network and fill in the password for this network. Press the CONFIRM button when done.

F The camera is now connecting to your home WiFi network, reconnecting with the App and rebooting. This can take up to two minutes.

G The camera is now connected to your Home WiFi network.



H The camera has been added to the list. To open the video stream press on the name of the camera.



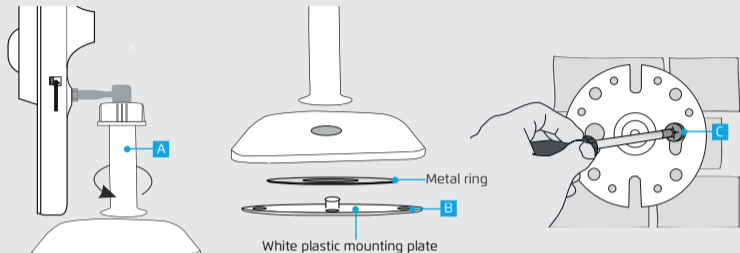
5. Edit/Delete camera

A Press the pencil button at the top of the screen to EDIT the name of the camera or to DELETE it.

B Press on the name of the camera to begin editing the name. Press the CONFIRM button when done.

C Press the DELETE button to delete the camera. Press the CONFIRM button when done.

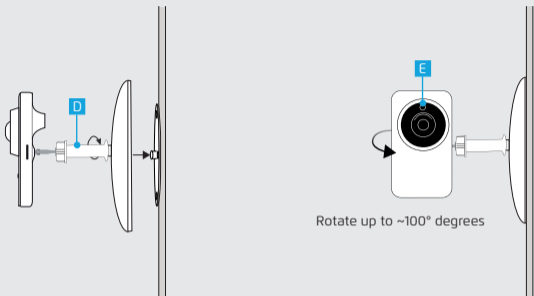
6



6. Mount the IP Camera

- A** Loosen the stand of the camera by unscrewing it from the foot.
- B** Remove the white plastic mounting plate from the camera

- C** Place the white plastic mounting plate on a flat surface and screw it tightly using screws. (Screws with plugs are included). Make sure the screw holes are not placed in a crack or a hole.



D Press the foot of the camera on the white plastic mounting plate (The metal ring does not have to be placed back). Screw the stand of the camera back on the foot and tighten it.

E It is possible to rotate the camera up to ~100° degrees.



If possible, dispose of this product at a recycling center. Do not dispose of this product with the household waste. WEEE: Dispose of the device at a recycling centre. More information: www.trust.com

Warranty

This product is covered by the legal warranty that applies to your country and it begins on the day of purchase. For additional information, visit: www.trust.com/warranty.

Copyright

The contents of the "User manual" are subject to copyright protection. Without prior written permission, reproducing or copying is prohibited. Information in these documents is subject to change without prior notice. Check www.trust.com/71119 for updates.

 For support and FAQ go to [trust.com/71119](http://www.trust.com/71119)

CE Declaration of conformity

Trust International B.V. declares that the TRUST SMART HOME-product:

model:	IPCAM-2000
item number:	71119
intended use:	Indoor

is in compliance with the essential requirements and other relevant provisions of the following directives: EMC Directive (2014/30/EU), Low Voltage Directive (2014/35/EU), ROHS Directive (2011/65/EC), R&TTE Directive (1999/5/EC). The product is compatible with the following norms/standards:

ETSI EN301-489-1 V1.9.2 (2011-09)	EN 50581:2012
ETSI EN 301-489-7 V1.3.1 (2005-11)	
ETSI EN 300 328 V1.8.1 (2012-06)	
EN 62311: 2008	
EN 60950-1 :2006+A11 :2009+A1: 2010+A12 :2011+A2 :2013	

Manufacturer/Authorised representative,



H. Donker, Procurement Director

Dordrecht, 09 March 2016

Trust International B.V.
LAAN VAN BARCELONA 600
3317DD DORDRECHT
NETHERLANDS
www.trust.com